

# Contents

- 1 INTRODUCTION..... 2**
- 2 PRE-REQUISITES..... 3**
- 3 INSTALLATION/REMOVAL ..... 4**
- 4 USE..... 6**
  - 4.1 SETUP ..... 6
    - 4.1.1 *Files panel*..... 6
  - 4.2 COLOURS ..... 8
    - 4.2.1 *Colours panel*..... 8
    - 4.2.2 *Lower panel* ..... 9
  - 4.3 FONTS ..... 10
    - 4.3.1 *Upper panel* ..... 10
    - 4.3.2 *Lower panel* ..... 11
  - 4.4 DISPLAY..... 12
    - 4.4.1 *Red panel* ..... 12
  - 4.5 EDITOR ..... 14
- 5 SUGGESTED WORKFLOW ..... 15**

# 1 Introduction

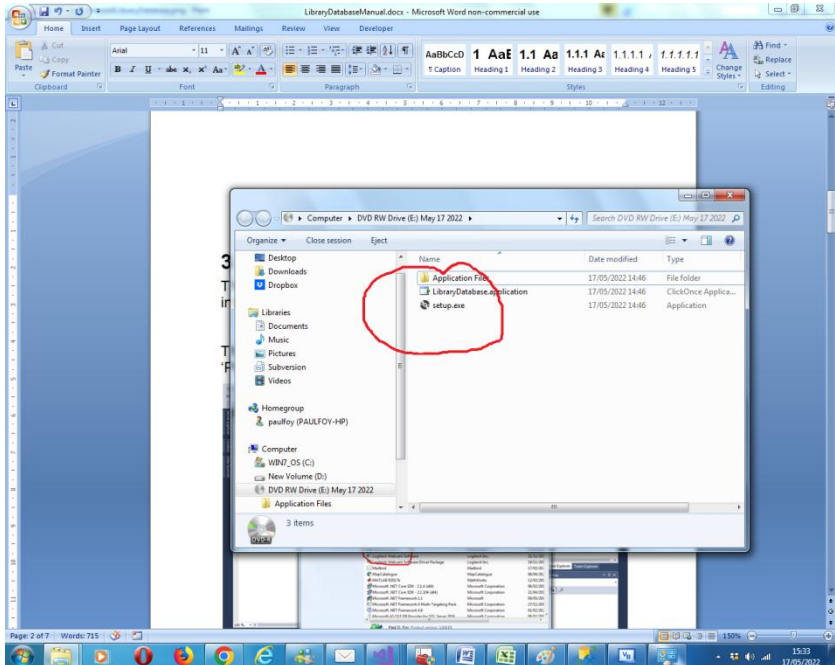
This is a manual for the installation and use of the application 'TextEffect'. The program is a Windows, Wordpad like, application, for randomly colouring a .txt document, and also doing some of the manipulations that would be associated with Wordpad, like annotating text and selected areas of text. That is a little beyond that which a simple Notepad application can do (but certainly not as comprehensive as Word itself).

## **2 Pre-requisites.**

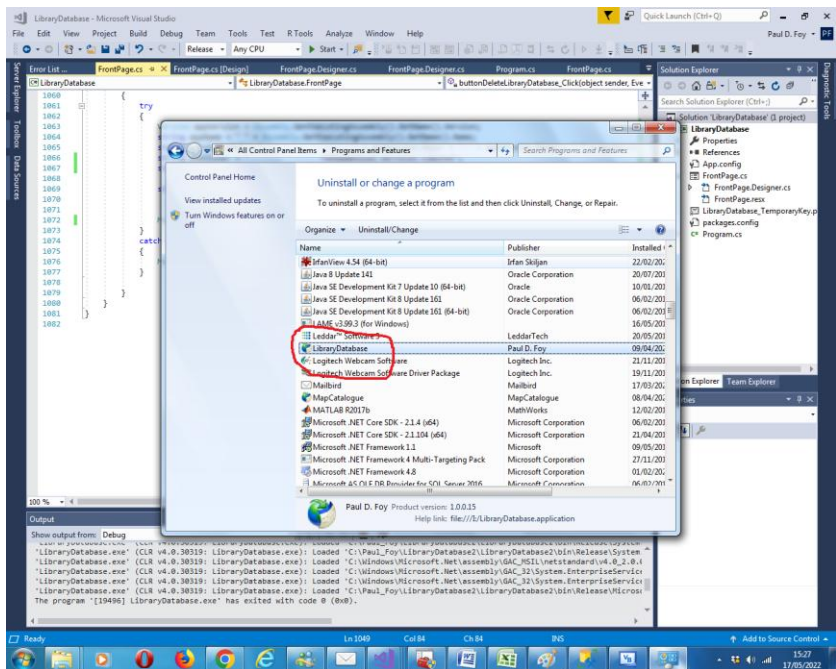
- [1] A PC running Windows 7 or above.
- [2] A USB stick or optical drive containing the program setup files, together with this manual (available online).

### 3 Installation/Removal

The program is installed by inserting the supplied stick or disc into the PC and running the 'setup.exe' program on it.



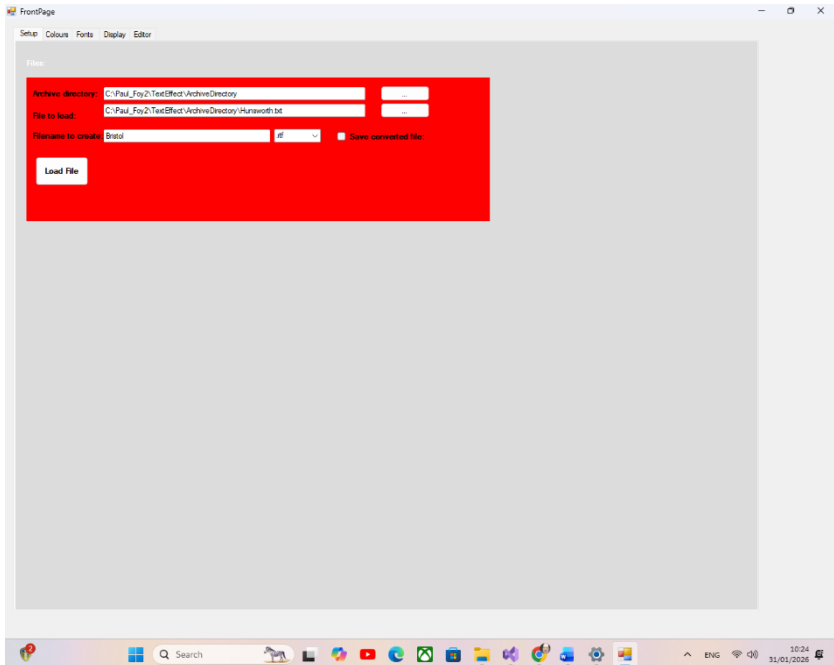
The program can be removed from the PC, by using the 'Program & Features' menu from within Control Panel.



## 4 Use

The application has 5 tabs (the first 2 tabs in the application):

### 4.1 Setup



#### 4.1.1 Files panel

The **Files** panel contains files used by the application.

**Archive directory:** the directory where all files are loaded from or saved to.

**File to load:** the file name of the .txt or .rtf file to load.

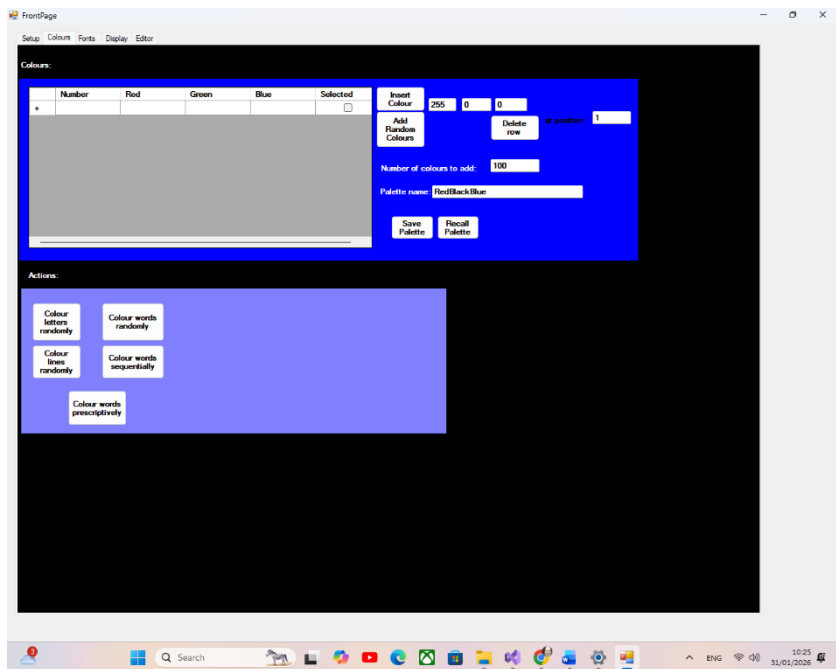
**Filename to create** this is the filename of the .txt, .rtf or .pdf file to create. The .pdf functionality is not as sophisticated as that of Word or Adobe as it involves converting the RichTextBox

control to a .bmp before using an ImageMagick library routine (<https://imagemagick.org/#gsc.tab=0>) to convert to a .pdf file.

The Save converted file checkbox permits saving of the file (with filename provided) to disc, rather than simply to the richTextBox of the Display tab.

The **Load File** button loads the file provided into the RichTextBox of the effects tab.

## 4.2 Colours



### 4.2.1 Colours panel

The **Colours** panel allows you to create colours as the pallet for colours to be used.

**Add Random Colours** adds **Number of colours to add**, random colours to the flexGrid. **Insert Colour** inserts the adjacent provided colour **at position** provided. **Delete row** deletes the row **at position** provided. On providing a **Palette name**, **Save Palette** and **Recall Palette** saves and recalls the pallet for use later.



### 4.2.2 Lower panel

**Colour words randomly** colour the words of the contents of the richTextBox randomly.

**Colour letters randomly** colour the letters of the contents of the richTextBox randomly.

**Colour lines randomly** colour the lines of the contents of the richTextBox randomly.

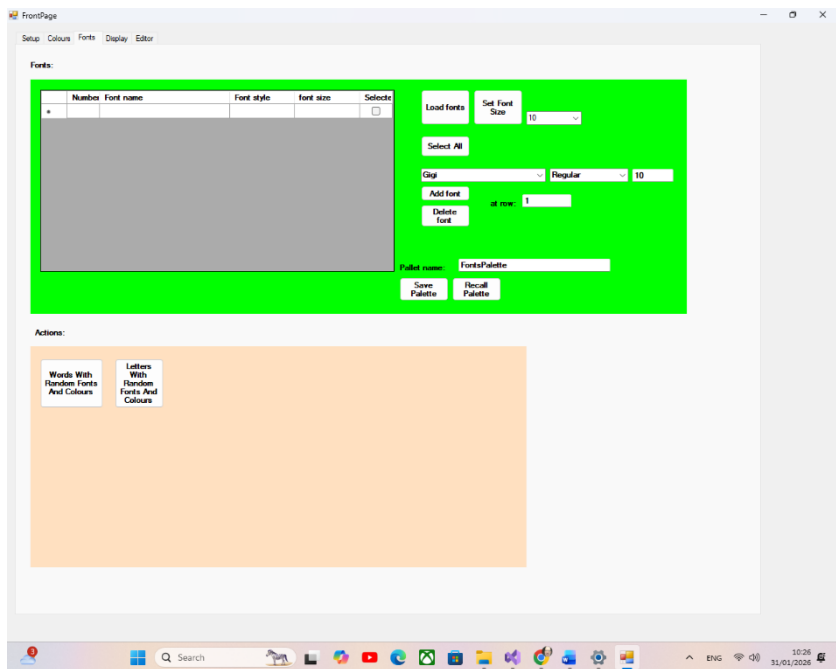
**Colour words prescriptively** give rise to the same colouring of individual words in which colours move out separately from the middle of the word according to the sequence of the list of colours in the colours panel of the setup tab.

**Colour words sequentially** cycles through the colours in the Colours flex grid, sequentially and repeatedly, to colour each word one after another.

The output of these functions is to the provided output file if the checkbox of the setup panel on the Setup tab is selected.

Otherwise the result effects the richTextBox only. Legally valid rtf code is produced.

## 4.3 Fonts



### 4.3.1 Upper panel

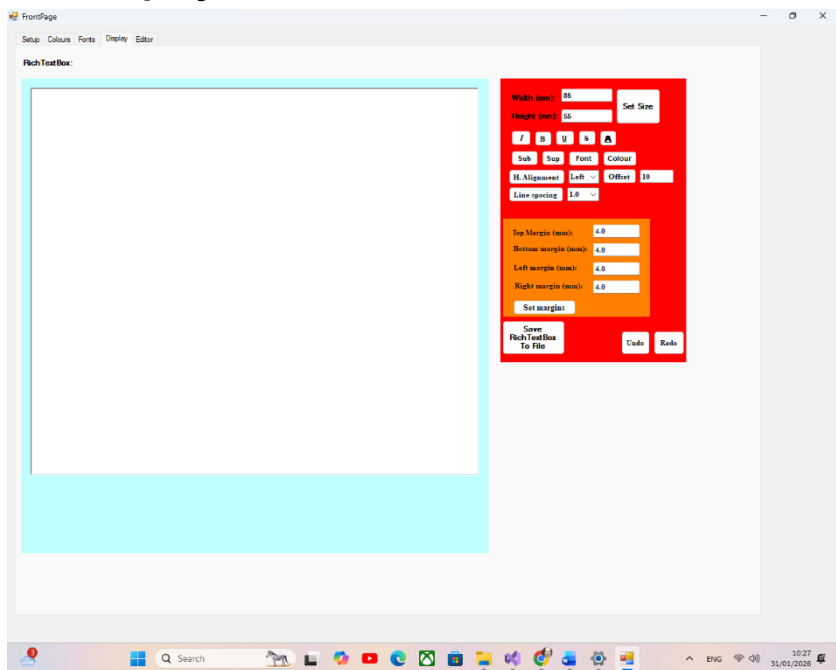
The flex grid can be populated with all fonts present in the system with the **Load fonts** button. The size of all fonts is set with the **Set Font Size** button using the value in the adjacent comboBox. Fonts can be selected individually or all at once with the **Select All** button. A font of prescribed name, style and size and row position can be added with the **Add font** button. Alternatively a font can be deleted with the **Delete font** button. All fonts are either saved or recalled to the provided pallet name .txt file with the **Save Palette** and **Recall Palette** button respectively.

### 4.3.2 Lower panel

Either words or individual letters, of the contents of the richRextBox on the Display tab, can be coloured with the **Words With Random Fonts And Colours** and **Letters With Random Fonts And Colours** respectively.

The output of these functions is to the provided output file if the checkbox of the setup panel on the Setup tab is selected. Otherwise the result effects the richTextbox only. Legally valid rtf code is produced.

## 4.4 Display



### 4.4.1 Red panel

This panel allows one to do Wordpad like annotations to the text of the adjacent richTextbox control. In addition it is possible to specify **Top**, **Bottom**, **Left** and **Right** margins (in mms) for the word wrap in the working area. This is via the **Set margins** button. Any resize of the working area automatically alters the margins present. The default margin size is 4mm.

The **Width** and **Height** of the editable area can be changed with the **Set Size** button. Selected areas of text can be toggled between **Italic**, **Bold**, **U**nderline or **S**trikethrough with those buttons. The background colour can be changed with the **A**

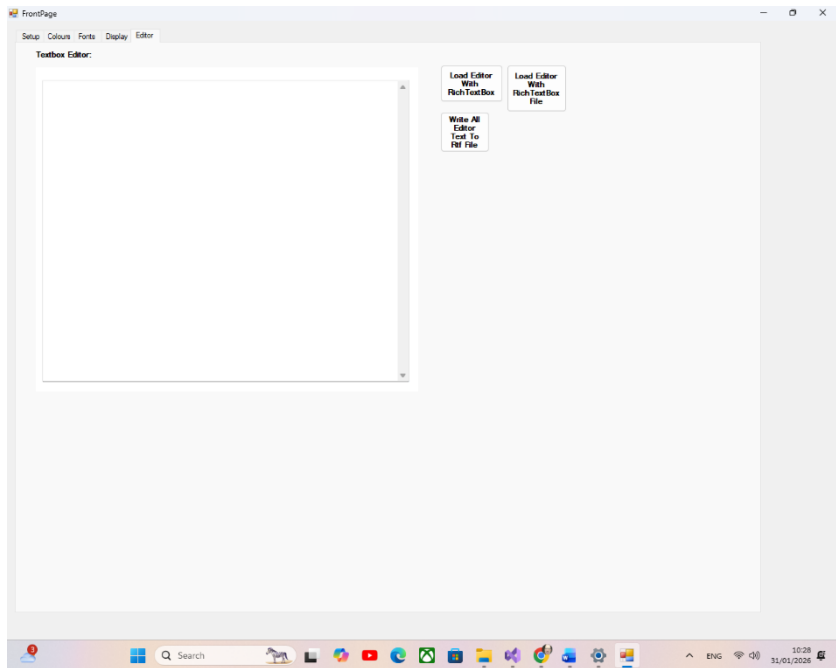
button. The **Font** and **Colour** of selected areas of text can be changed with those buttons. Subscripts and superscripts can be added to a selected area using the **Sub** and **Sup** buttons respectively. The horizontal alignment of the current paragraph can be changed with the H. Alignment button. The choices are left justified (the default), centred or right justified. The offset (in mm) to the first line of the paragraph is set with the **Offset** button. The line spacing (in twips) is set with the **Line spacing** button.

With all these buttons if a selection is not made then the change is made to the whole document.

The **Save To File** button saves the editable area to the file specified in the Setup tab.

Changes made (apart from those made with the buttons on the blue panel) can be undo or redone with the **Undo** and **Redo** buttons respectively.

## 4.5 Editor



The contents of the richTextbox on the Display tab can be loaded into the textbox via the **Load Editor With RichTextBox** button. This textbox can be used as an editor. The size of the editor reflects that of the richTextbox (less margins). An .rtf file can be loaded into the richTextbox with the **Load Editor With RichTextBox**. The file is the one selected in the Setup tab. The text in this editor can be written to an rtf file using the **Write All Editor Text To Rtf File**. The file name is that provided in the setup tab and is created in the archive directory also provided.

## 5 Suggested Workflow

Create your document using the richTextbox, including all the features provided via the pallet. The size and margins of this document can be set. Help in doing this, if it is needed, is by using the textbox editor, which mirrors the size of the richTextBox less margins. This shows the legally valid rtf code Of the richTextbox. Or load a .txt or .rtf document into the richTextbox using the **Load File** button.

Alternatively an .rtf file can be produced directly using one of the buttons in the Actions panels. This produces (if requested) a legally valid .rtf file, of the effects produced.

The contents of the richTextbox, including its size can be saved, in a rough and ready .pdf document, if desired.

Paul D. Foy

Mathematical Services

January 2026